



EHESP

STRATEGIC PROJECT



20192023

Since 1950,
life expectancy
has increased by

25 years

Thanks to access to
treatment, the number of child
deaths is decreasing by

50 %

600 000

child deaths in the world
from air pollution

In France, life expectancy
in good health has stagnated
for

10 years

21
millions

people admitted to A&E in
France per year

For every 100 Euros spent
on treatment, French
households contribute

7
euros

Support

through quality training to the highest standard

In a century, discoveries in health and the change in living conditions have increased the life expectancy of our fellow citizens two-fold.

These technical advances provide us with a glimpse of new horizons but only make sense if they can be of benefit to all.

There are however a number of current challenges for our societies, related to demographic and epidemiological transition or even climate change.

Therefore, the needs and approaches in public health have changed considerably, as have the requirements in terms of professional training and learning methods.

For 70 years, the EHESP School of Public Health, major

The response to healthcare challenges in the world, today and in the future

stakeholder in public health in France, has been developing a voluntarist approach to training and research.

The change in its status has made it a unique structure, bringing together vocational training, academic training and research. A unique French, multi- and transdisciplinary model, supported by an international network, the EHESP has become a reference for many foreign countries.

Through its 2019-2023 strategic project, the EHESP intends to continue to analyse and be one step ahead of changes in public health, in order to remain the go-to professional and academic stakeholder at the service of decision-makers, healthcare professionals and beyond that, populations.

Our establishment's

main
missions

TRAIN PEOPLE

in management, inspection or control
positions in the field of health, welfare or
medical and social support

CONTRIBUTE TO RESEARCH

in public health

MANAGE

a higher education
network in public health

DEVELOP INTERNATIONAL RELATIONS

through discussions with establishments
dispensing similar courses

Ambitions

Reinforce an original and innovative higher education and research establishment model with strong professional grounding, ensuring public service missions.

Make the school an innovative institution of excellence, recognised in public health training, research and expertise.

Participate in the transformations
of healthcare systems in France or
abroad


Take on global or planetary health
concepts

Help lead debates, contribute to
discussions and interrogations as
to the political decisions made in
the field of health

Reinforce the values of public
service and societal commitment

ethics cooperation
public service values
excellence
social and environmental
responsibility





Public health is the science and art of preventing disease,
prolonging life and promoting health through organised
efforts of society.

WHO



Priority areas

From healthcare system performance to new environmental challenges, to help in public decision-making.

LONGSTANDING SKILLS :
SUPPORTING CHANGES IN THE HEALTHCARE SYSTEM

Organisation, management
and performance of the French
healthcare system

Analysis of
organisations in terms
of treatment and
healthcare services

Quality, relevance and
safety of treatment,
medicinal products and
healthcare products

Environments and health

An environment
favourable to health

Multiple exposure
throughout life

Territorial and
environmental inequality
in health

Public health and
occupational health
working together
to more effectively
manage workers' overall
health

Health, populations and public policies

The socioeconomic
determinants of health

Social inequalities
in health and
vulnerabilities

Health promotion and
health prevention and
access to treatment
policies

Policies promoting
autonomy and the
inclusive society

The professional
dynamics of those in
charge of developing
public policies

Health democracy

5-year

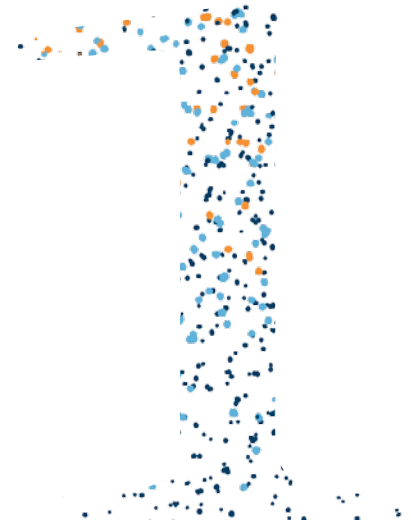
strategic
orientations

Offer all public health stakeholders quality and innovative training, in line with the major changes in the work and academic environment in France and in the world.

Re-engineer training around a skills-based approach, courses tailored to the individual and work/study training

Take account of changes related to professional training reform, reinforce the training scheme throughout a career, and consultancy as part of a new structure

Generalise active learning and innovative practices, in a logic of learners being fully proactive in their training



Increase the visibility of research and scientific consultancy activities, encouraging political decisions, thanks to sustained structuring, coordination and value creation

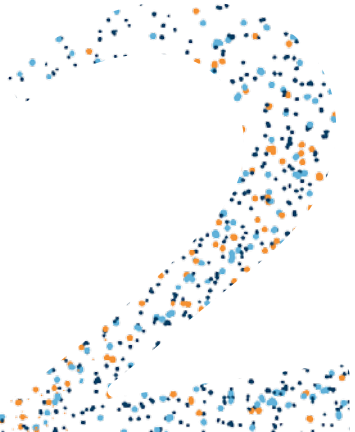
Reinforce structuring of research in services and management

Develop research on the occupational health environment and on public health policies

Optimise the recruitment, career assessment and attractiveness process

Continue national and international strategic management of the public health doctoral network

Amplify the research/ knowledge transfer/ consultancy/public decision-making connection





Reinforce the School's international reach and reputation

Make international aspects our core training experience for the community, by improving **intercultural skills**

Develop international **technical expertise** in the areas in which we stand out, at the service of development

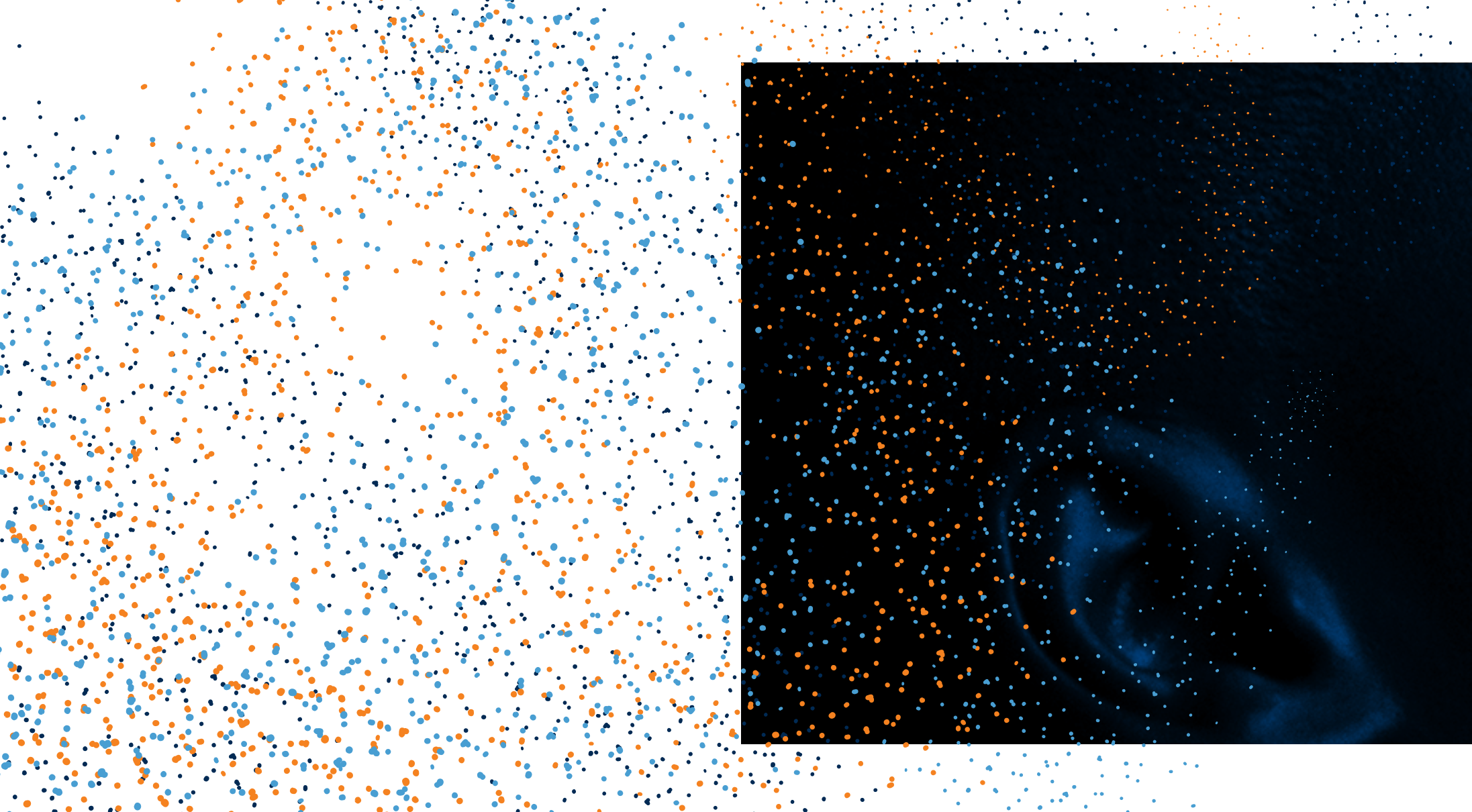
Refine the international **partnerships policy** to ensure international knowledge production, while targeting a small number of strategic partnerships worldwide

Galvanise campus life to strengthen the feeling of belonging and to create favourable living conditions

A policy to galvanise life on campus :
promote a stimulating environment
for the EHESP community
on the two sites in Rennes and Paris

ALUMNI network :
coordinate and consolidate
this network, making its members
EHESP's "ambassadors"







“ The key is not to live, but to live well. ”

PLATO

ehesp.fr